

CERTIFIED RECORD OF LAND CORNER MONUMENTATION

History of original corner establishment: *
The corner was established by H. Gradon in 1881 under
Contract No. 383. The original notes state:

DIAGRAM
T10S R32E
S25
1/4---
S36

N89°53'W on true line between Sec 25 & 36

40.06 Set stone 14x10x6 for 1/4 Sec cor from which
An alder 4 in dia bears N10°W 80 lks dist
An alder 6 in dia bears S20°W 7 lks dist

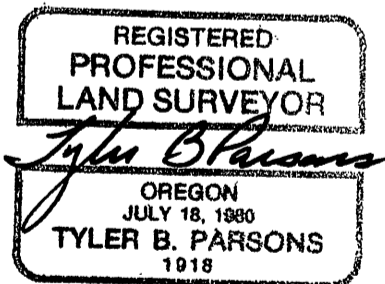
Description of corner evidence found:
Found a 14x8x6 stone marked 1/4.
A 32" Cottonwood (alder) bears S41°W 7.4 ft (S20°W 7 lks).

Description of monument and accessories I establish to perpetuate the
original location of this corner:
Set a 2-1/2x30" aluminum monument 22" in the ground in a mound
of stone & buried the original stone on the North side.
New BTs:
A 5" Pine bears N30°40'E 43.9 ft scribed 1/4S25BT.
A 22" Pine bears S75°27'W 114.5 ft scribed 1/4S36BT.

T10S R32E
S25
1/4---
S36
PLS1918
1989

New BTs have 3/4" brass washers marked PLS1918 attached to the BT
blaze, faces and bands painted with red tree marking paint, and
BT tags and Attention or Land Survey Monument signs. A steel fence
post with Attention or Land Survey Monument sign is driven
approximately 3-5 feet from the corner.

Sun Cadastral Survey
Contract No.: 53-04H1-7-4011
Project No.: 8722LB
Field Book: 7-66
Work Accomplished: 6/2/89
Witnesses: Louise Parsons



PARSONS SURVEYING
1915 S.E. Stone Street
Corvallis, OR 97333
(503) 752-7515

Office of COUNTY SURVEYOR County of GRANT
State of OREGON, I hereby certify that the within instrument was filed in this office
for record on the 10 day of Aug, 1989

Robert D. Baggett by _____
(COUNTY OFFICIAL) (DEPUTY)